

# Specific Gene Expression in Pancreatic $\beta$ -Cells

## Cloning and Characterization of Differentially Expressed Genes

Yoav Arava, Konstantin Adamsky, Chai Ezerzer, Vitaly Ablamunits, and Michael D. Walker

**Identification and characterization of genes expressed preferentially in pancreatic  $\beta$ -cells will clarify the mechanisms involved in the specialized properties of these cells, as well as providing new markers of the development of type 1 diabetes. Despite major efforts, relatively few  $\beta$ -cell-specific genes have been characterized. We applied representational difference analysis to identify genes expressed selectively in the pancreatic  $\beta$ -cell line  $\beta$ TC1 compared with the pancreatic  $\alpha$ -cell line  $\alpha$ TC1 and isolated 26 clones expressed at higher levels in the  $\beta$ -cells than in the  $\alpha$ -cells. DNA sequencing revealed that 14 corresponded to known genes (that is, present in GenBank). Only four of those genes had been shown previously to be expressed at higher levels in  $\beta$ -cells (insulin, islet amyloid polypeptide, neuronatin, and protein kinase A regulatory subunit [RI $\alpha$ ]). The known genes include transcription factors (STAT6) and mediators of signal transduction (guanylate cyclase). The remaining 12 genes are absent from the GenBank database or are present as expressed sequence tag (EST) sequences (4 clones). Some of the genes are expressed in a highly specific pattern-expression in  $\beta$ TC1 and islet cells and in relatively few of the non- $\beta$ -cell types examined; others are expressed in most cell types tested. The identification of these differentially expressed genes may aid in attaining a clearer understanding of the mechanisms involved in  $\beta$ -cell function and of the possible immunogens involved in development of type 1 diabetes. *Diabetes* 48:552-556, 1999**

**P**ancreatic  $\beta$ -cells have the unique capacity for production and regulated secretion of insulin in response to metabolic needs. To fulfill these functions, they use specialized proteins found exclusively or predominantly in  $\beta$ -cells; relatively few such proteins have been characterized to date. In addition to the hormones insulin and islet amyloid polypeptide (IAPP), well-characterized  $\beta$ -cell-enriched proteins include the insulin gene transcription factors PDX1/IPF1 (1-3) and BETA2/NeuroD (4,5)

From the Departments of Biological Chemistry (Y.A., K.A., C.E., M.D.W.) and Immunology (V.A.), Weizmann Institute of Science, Rehovot, Israel.

Address correspondence and reprint requests to Michael D. Walker, Department of Biological Chemistry, Weizmann Institute of Science, Rehovot, Israel 76100. E-mail: bcwalker@wicemail.weizmann.ac.il.

Received for publication 24 August 1998 and accepted in revised form 17 November 1998.

DMEM, Dulbecco's modified Eagle's medium; ds, double-strand; EST, expressed sequence tag; IAPP, islet amyloid polypeptide; IL, interleukin; RDA, representational difference analysis; RT-PCR, reverse transcription-polymerase chain reaction; SSC, NaCl and Na citrate; UV, ultraviolet.

and proteins involved in glucose transport and sensing, such as GLUT2 and glucokinase (6).

Type 1 diabetes is an autoimmune disease in which  $\beta$ -cells are specifically targeted for destruction; both cell- and humoral-mediated immunities are involved, with T-cells directly responsible for the process of  $\beta$ -cell killing (7). Circulating islet cell-specific autoantibodies can be detected in newly diagnosed type 1 patients and in the sera of those healthy relatives who will eventually progress to overt type 1 diabetes (8,9). This finding has opened the way to approaches aimed at prediction and prevention of  $\beta$ -cell autoimmune destruction and type 1 diabetes. Various type 1 preventive trials suggest that the autoimmune destructive process can be delayed or prevented if treatment is begun early enough in the course of the disease (10). There is therefore a need to identify additional autoantigens to improve early detection of the disease.

With a view to better understanding the development, function, and pathology of  $\beta$ -cells, a number of studies have focused on identifying pancreatic  $\beta$ -cell-specific genes (11-13), yet relatively few genes have thus far been identified and characterized. We have applied representational difference analysis (RDA) to preparations of mRNA derived from the established cell lines  $\alpha$ TC1 (14) and  $\beta$ TC1 (15). As a result, we identified 26 cDNA clones expressed preferentially in  $\beta$ -cells. In this report, we describe the initial characterization of those clones.

### RESEARCH DESIGN AND METHODS

**Cell lines.**  $\alpha$ TC1 (mouse glucagon-producing cells) (14) and  $\beta$ TC1 (mouse insulin-producing cells) (15) were grown in Dulbecco's modified Eagle's medium (DMEM) supplemented with 15% horse serum, 2.5% fetal calf serum, and penicillin/streptomycin.

**RNA preparation and cDNA-RDA protocol.** RNA was prepared by using the TRI reagent kit (Molecular Research Center) followed by DNase I treatment for 20 min at 37°C. PolyA<sup>+</sup> RNA was selected on an oligo-dT cellulose column (Boehringer Mannheim). RNA from mouse islets was prepared by collagenase digestion followed by fractionation on a density gradient of Histopaque (16) and extraction of RNA using the guanidinium thiocyanate procedure (17). For cDNA synthesis, two rounds of polyA<sup>+</sup> selection were performed, and 10  $\mu$ g RNA was used to synthesize double-strand (ds)-cDNA (17). Two micrograms ds-cDNA was used for the RDA procedure, which was performed as described by Hubank and Schatz (18). The DP3 fraction was digested with *DpnII*, separated on a 1.5% low-melting-point agarose gel, excised from the gel with Jetsorb resin (Genomed), and cloned into the *Bam*HI site of the vector pBS-KS, which was transformed into *Escherichia coli* DH5 $\alpha$  or XL-1 blue.

**Slot blot analysis.** RNA was resuspended in a solution of 50% formamide, 7% formaldehyde, 1 $\times$  SSC (150 mmol/l NaCl, 15 mmol/l Na citrate) and incubated at 68°C for 15 min. With a minifold II microsample filtration manifold (Schleicher & Schuell), the denatured sample was loaded on a Nylon membrane prewashed with 20 $\times$  SSC, washed twice with 20 $\times$  SSC, and ultraviolet (UV) cross-linked to the membrane. Radioactive probes were prepared by random priming using the hexanucleotide mix (Boehringer Mannheim), and filters were hybridized overnight at 42°C in a hybridization solution containing 50% formamide, 5 $\times$  Denhardt's solution, 5 $\times$  SSC, 0.1% SDS, and 250  $\mu$ g/ml denatured salmon sperm DNA.

**Reverse transcription–polymerase chain reaction and Southern blotting.** Reverse transcription–polymerase chain reaction (RT-PCR) was performed using the Access RT-PCR System (Promega) with 0.5 µg or 5 ng total RNA. Aliquots were removed every 5 cycles between cycles 20 and 30 to permit optimal comparison of expression levels. Samples were fractionated on 1.2% agarose gel, denatured by incubation in 0.5 mol/l NaOH, 1.5 mol/l NaCl (2 × 15 min), and renatured by incubation in 0.5 mol/l Tris-HCl, pH 7.4, 3 mol/l NaCl (2 × 15 min). Samples were applied to a Nylon membrane and UV cross-linked to the membrane. Hybridization with radioactive probes was performed as described above.

## RESULTS

**Products of RDA procedure.** To clone genes that are expressed preferentially in β-cells, we used the cDNA-RDA protocol with ds-cDNA from βTC1 cells as a tester and ds-cDNA from αTC1 as a driver. Selection products were analyzed by agarose gel electrophoresis. Distinct bands became progressively stronger following successive rounds of subtraction and amplification. To maximize the number of differentially expressed genes isolated, we excised from the gel all detectable DP3 products and ligated this material to the vector pBS followed by transformation into *E. coli* to generate a β-cell-enriched library.

**Analysis of β-cell-enriched library.** Three hundred clones were picked at random from the library and subjected to Southern blot analysis (data not shown). Duplicate filters were hybridized with cDNA probes prepared from βTC1 and αTC1 mRNA. Clones that were positive for the βTC1 probe and negative for the αTC1 probe were in turn used to reprobe

the Southern blots. These analyses indicated that the 300 clones included at least 26 distinct DNA fragments corresponding to differentially expressed mRNA species.

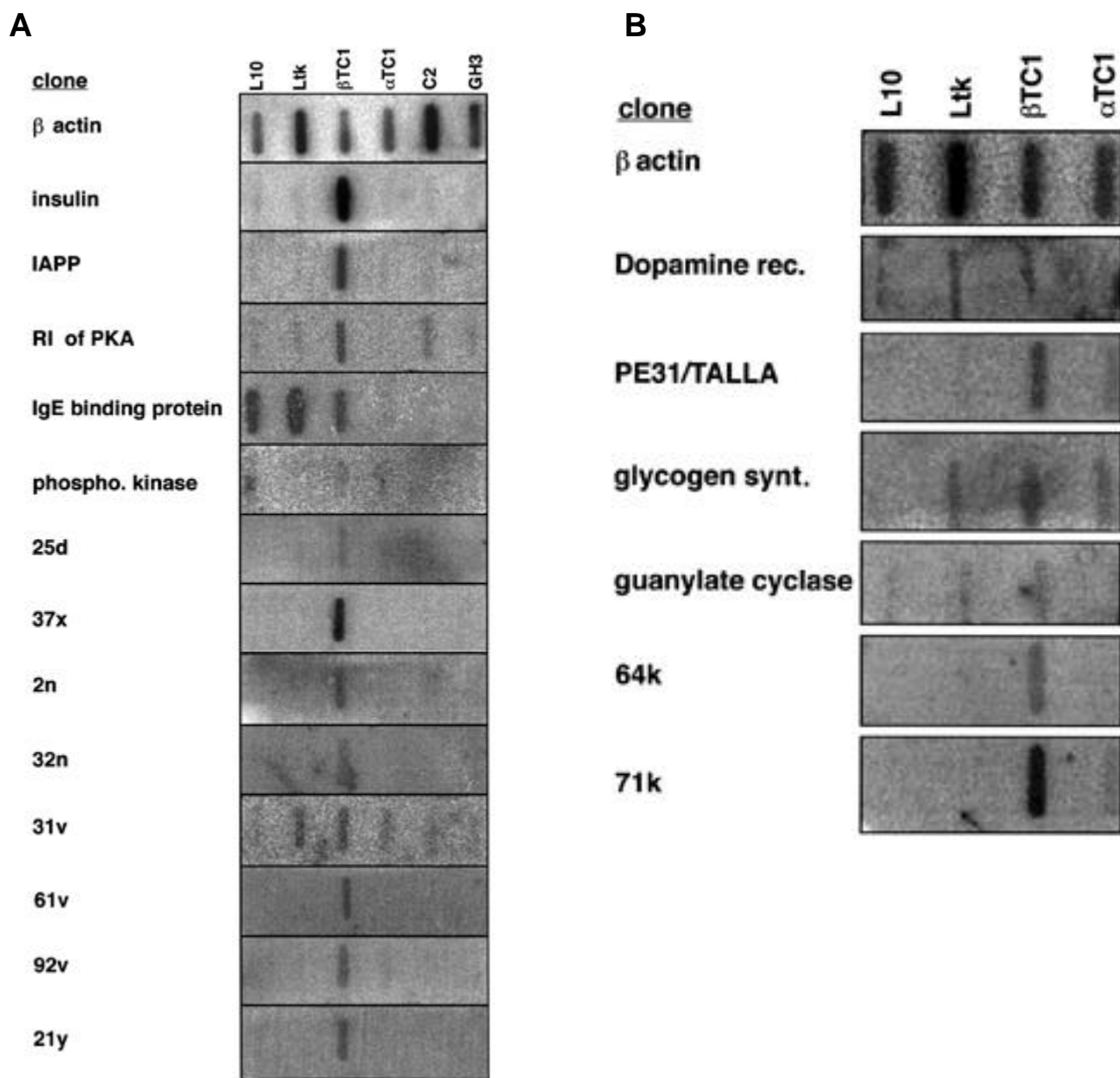
**Sequence analysis and expression patterns of cloned genes.** Clones identified by the above procedure were subjected to DNA sequencing analysis, and the resulting sequences were compared with the GenBank database by Blast search (19). Approximately half of the clones identified (14 of 26) corresponded to known genes (Table 1). These included genes known previously to be expressed preferentially in β-cells, such as insulin, IAPP, neuronatin (13), and protein kinase A regulatory subunit (RI $\alpha$ ) (13,20), as well as known genes that had not previously been recognized to be differentially expressed in β-cells compared with α-cells, such as vinculin, guanylate cyclase, and STAT6. The remaining 12 clones are not represented in the database or are represented only as expressed sequence tag (EST) sequences (Table 1).

To analyze the expression pattern of the cloned genes, we performed RNA slot blot analysis with 10 µg total RNA from six different cell lines: Ltk<sup>-</sup> (fibroblasts), L10 (lymphoid cells), βTC1 (pancreatic β-cells), αTC1 (pancreatic α-cells), C2 (muscle cells), and GH3 (pituitary cells) using the different inserts as probe (Fig. 1A). Inserts that failed to hybridize with 10 µg total RNA, presumably because of low abundance, were hybridized with blots containing 5 µg polyA<sup>+</sup> RNA from the indicated cells (Fig. 1B). All clones displayed a stronger signal in β-cells than in α-cells (confirming the low frequency of

TABLE 1  
Summary of clones isolated by RDA

Clone	Gene homology	Accession number	Frequency	βTC1/αTC1 ratio
63y	Dopamine receptor	X55674	3	2
59v	Glycogen synthase	J05446	1	3.7
10d	Guanylate cyclase	M22562	1	>50
23d	IAPP	M25389	>10	>50
28d	IgE	M10062	3	4
1v	Insulin	X04725	2	>50
46d	Neuronatin	X833569	2	>50
25d	ndr1	U60593	1	2
93v	Phosphorylase kinase	X74616	1	ND
1d	PKA RI $\alpha$	M17086	>10	>50
37x	P-type ATPase	AF038007	1	>50
20	STAT6	L47650	1	>50
48d	TALLA1	D26483	1	2.7
88v	Vinculin	L18889	1	28
41	Unknown	C88962 (EST)	4	ND
64k	Unknown	W10530 (EST)	1	16.9
31v	Unknown	AA217936 (EST)	1	2.2
61v	Unknown	Z47778 (EST)	1	11.5
32n	Unknown	—	2	>50
60	Unknown	—	1	2.6
92v	Unknown	—	1	>50
71k	Unknown	—	5	19
2n	Unknown	—	>5	13.4
15x	Unknown	—	1	>50
21y	Unknown	—	1	>50
24y	Unknown	—	1	2

Shown for each clone are the closest homolog found in the GenBank database, the accession number of the GenBank homolog, the number of times each clone was independently isolated, and the ratio of expression level observed in βTC1 cells compared with αTC1 cells as determined by phosphorimager quantitation of RNA slot blot. ND, not determined.



**FIG. 1.** RNA slot blot analysis: RNA was extracted from the indicated cell lines, and 10 µg of total RNA (A) or 5 µg of polyA<sup>+</sup> selected RNA (B) was applied to a nylon membrane. Each membrane strip was hybridized with probes prepared from the indicated RDA fragments or β-actin cDNA as positive control.

false-positive clones isolated using this procedure). Most clones showed low expression in the non-pancreatic cell lines tested. Included in the collection were genes whose expression in β-cells was relatively high (such as insulin) and much lower (such as guanylate cyclase) and genes whose selectivity of expression in β-cells compared with α-cells was high (such as RIα) and low (such as TALLA1). Thus the RDA procedure is an effective and sensitive method for identifying differentially expressed β-cell genes. In our hands, experiments performed using differential display methodologies (21,22) failed to identify differentially expressed β-cell genes (data not shown).

To test the distribution of transcripts in different mouse tissues, we performed RT-PCR analysis using primers designed according to the sequence of the novel genes (Fig. 2A). As

expected, signals were highest with βTC1 RNA. In addition, most clones showed high expression in the brain (clones 71k, 60, 32n, 37x, 41, 2n), consistent with previously observed similarities of gene expression between β-cells and brain. Only one of the clones (21y) appeared to be expressed exclusively in β-cells. Northern blot analysis showed that most or all of the clones represent different mRNAs (data not shown).

βTC1 and αTC1 cells are tumor cell lines whose patterns of gene expression may differ significantly from their natural counterparts. We wished to confirm that the clones isolated represent genes also expressed preferentially in normal β-cells. Since expression levels of the RDA clones were too low to permit detection by in situ hybridization analysis of islets (data not shown), we performed RT-PCR analysis of

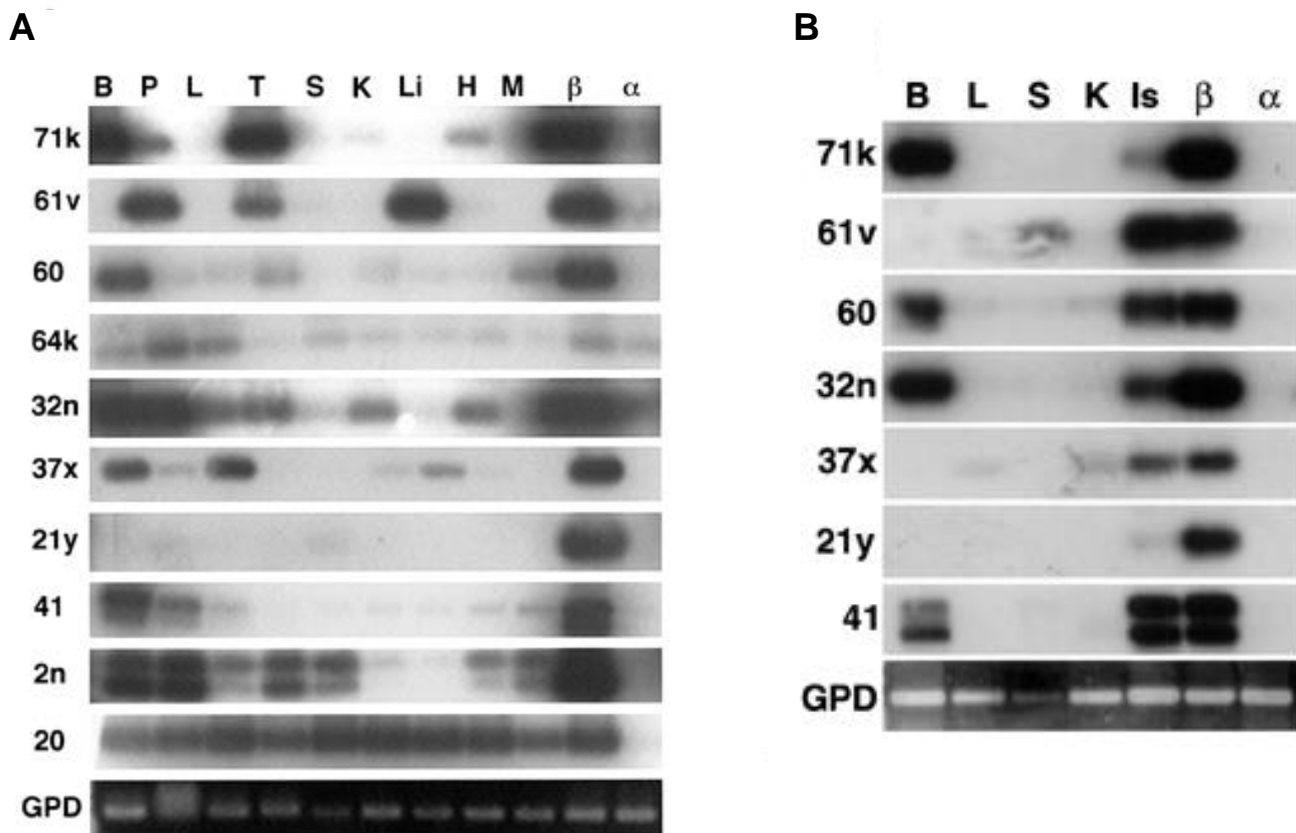


FIG. 2. RT-PCR analysis of RNA extracted from the following mouse tissues: brain (B), pancreas (P), lung (L), testis (T), spleen (S), kidney (K), liver (Li), heart (H), muscle (M), islets (Is),  $\beta$ TC1 ( $\beta$ ), and  $\alpha$ TC1 ( $\alpha$ ). Total RNA (A, 0.5  $\mu$ g; B, 5 ng) was subjected to RT-PCR followed by hybridization with the indicated probes. The lower panel shows the ethidium bromide staining of PCR reactions performed with glyceraldehyde-3-phosphate dehydrogenase (GPD) primers, as a control for the efficiency of the RT-PCR reaction.

RNA isolated from mouse islets. All seven clones examined showed preferential expression in islet RNA (Fig. 2B). For five of the seven clones, expression in islets was similar to that for  $\beta$ TC1 cells (Fig. 2B); in the case of two clones, expression was significantly lower but still detectable in islet RNA, and higher than in other tissues (Fig. 2B). Thus these data indicate that the RDA clones show preferential expression in normal  $\beta$ -cells as well.

#### DISCUSSION

The procedure described in this report resulted in the isolation of clones corresponding to 26 genes. Of those, 14 correspond to known genes, including genes previously known to be expressed differentially in  $\beta$ -cells such as insulin and IAPP, thus validating the effectiveness of the procedure. Also among the known genes were several whose differential expression had not been previously described; included among this class are the genes for guanylate cyclase, dopamine receptor, glycogen synthase, phosphorylase kinase, IgE binding protein, TALLA1, STAT6, and vinculin. Although the reason for higher levels of expression of these proteins in  $\beta$ -cells is unclear at this stage, several of the genes have functions that might have important implications for  $\beta$ -cell activities.

The identification of guanylate cyclase in this screen may be relevant to the mechanism of  $\beta$ -cell destruction in type 1 diabetes. Cytosolic guanylate cyclases (23) can be activated by nitric oxide, which has been implicated in cytokine-medi-

ated  $\beta$ -cell damage (24). Although the effects of elevated cGMP levels in  $\beta$ -cells are not known, studies in other cell systems have identified effects on  $\text{Ca}^{2+}$  channels (25), which play a central role in mediating nutrient-dependent insulin secretion in  $\beta$ -cells.

A second gene identified in this screen that may be implicated in cytokine-mediated effects on  $\beta$ -cells is STAT6. Members of the STAT (signal transducers and activators of transcription) family are cytosolic cryptic transcription factors that become activated on cytokine binding to the cognate membrane receptor and consequent activation of Janus family (Jak) tyrosine kinases (26). STAT6 has been shown to mediate the effects of interleukin (IL)-4 and IL-13 on gene expression (27). IL-4 is believed to have a protective effect on development of type 1 diabetes, though it is generally considered to function through direct action on lymphocytes (28). The presence of STAT6 in  $\beta$ -cells raises the possibility that IL-4 may also have direct protective effects on  $\beta$ -cells.

Database comparisons show that 12 of the genes are not represented in GenBank or (in 4 cases) are represented only as EST sequences. A number of clones show sufficient similarity to known proteins at either the protein or DNA level to indicate a possible function. For example, clone 24y may correspond to a novel transcription factor since it possesses a characteristic PHD finger domain (29). Clone 32n shows significant homology to the BMP1 family of

growth factors (30). Further characterization of these clones will permit evaluation of their role in the function and pathology of β-cells.

#### ACKNOWLEDGMENTS

This work was supported by grants to M.D.W. from the Israel Academy of Sciences and Humanities, the Juvenile Diabetes Foundation International, the Leo and Julia Forchheimer Center for Molecular Genetics at the Weizmann Institute, and the Levine Fund. M.D.W. holds the Marvin Meyer and Jenny Cyker Chair of Diabetes Research.

We would like to thank Dr. Shimon Efrat for providing the αTC1 and βTC1 cells, Drs. Ole Madsen, Cornelis Murre, Hanne Richter-Olesen, David Schatz, and Osamu Yoshie for valuable discussions, and Sara Weiss for assistance with RNA preparation.

#### REFERENCES

- Ohlsson H, Karlsson K, Edlund T: IPF1, a homeodomain containing transactivator of the insulin gene. *EMBO J* 12:4251–4259, 1993
- Leonard J, Peers B, Johnson T, Ferreri K, Lee S, Montminy MR: Characterization of somatostatin transactivating factor-1, a novel homeobox factor that stimulates somatostatin expression in pancreatic islet cells. *Mol Endocrinol* 7:1275–1283, 1993
- Miller CP, McGehee RE, Habener JF: IDX-1: a new homeodomain transcription factor expressed in rat pancreatic islets and duodenum that transactivates the somatostatin gene. *EMBO J* 13:1145–1156, 1994
- Naya FJ, Stellrecht CMM, Tsai MJ: Tissue-specific regulation of the insulin gene by a novel basic helix-loop-helix transcription factor. *Genes Dev* 9:1009–1019, 1995
- Lee JE, Hollenberg SM, Snider L, Turner DL, Lipnick N, Weintraub H: Conversion of *Xenopus* ectoderm into neurons by NeuroD, a basic helix-loop-helix protein. *Science* 268:836–844, 1995
- Efrat S, Tal M, Lodish HF: The pancreatic beta-cell glucose sensor. *Trends Biochem Sci* 19:535–538, 1994
- Bach JF: Insulin-dependent diabetes mellitus as an autoimmune disease. *Endocr Rev* 15:516–542, 1994
- Bonifacio E, Genovese S, Braghi S, Bazzigaluppi E, Lampasona V, Bingley PJ, Rogge L, Pastore MR, Boggetti E, Bottazzo GF: Islet autoantibody markers in IDDM: risk assessment strategies yielding high sensitivity. *Diabetologia* 38:816–822, 1995
- Verge CF, Gianani R, Kawasaki E, Yu L, Pietropaolo M, Jackson RA, Chase HP, Eisenbarth GS: Prediction of type I diabetes in first-degree relatives using a combination of insulin, GAD, and ICA512bdc/IA-2 autoantibodies. *Diabetes* 45:926–933, 1996
- Schlott N, Eisenbarth GS: Isohormonal therapy of endocrine autoimmunity. *Immunol Today* 16:289–294, 1995
- Neophytou PI, Muir EM, Hutton JC: A subtractive cloning approach to the identification of mRNAs specifically expressed in pancreatic beta-cells. *Diabetes* 45:127–133, 1996
- Yamato E, Ikegami H, Miyazaki JI, Ogihara T: Identification of genes regulated by glucose in a pancreatic beta-cell line by a new method for subtraction of mRNA. *Diabetologia* 39:1293–1298, 1996
- Niwa H, Harrison LC, DeAizpurua HJ, Cram DS: Identification of pancreatic beta cell-related genes by representational difference analysis. *Endocrinology* 138:1419–1426, 1997
- Powers AC, Efrat S, Mojsov S, Spector D, Habener JF, Hanahan D: Proglucagon processing similar to normal islets in pancreatic alpha-like cell line derived from transgenic mouse tumor. *Diabetes* 39:406–414, 1990
- Efrat S, Linde S, Kofod H, Spector D, Delannoy M, Grant S, Hanahan D, Baekkeskov S: Beta-cell lines derived from transgenic mice expressing a hybrid insulin gene-oncogene. *Proc Natl Acad Sci U S A* 85:9037–9041, 1988
- Gotoh M, Maki T, Kiyozumi T, Satomi S, Monaco AP: An improved method for isolation of mouse pancreatic islets. *Transplantation* 40:437–438, 1985
- Ausubel FM, Brent R, Kingston RE, Moore DD, Seidman JG, Smith JA, Struhl K: *Current Protocols in Molecular Biology*. New York, Greene/Wiley-Interscience, 1988
- Hubank M, Schatz DG: Identifying differences in messenger-RNA expression by representational difference analysis of cDNA. *Nucleic Acids Res* 22:5640–5648, 1994
- Altschul SF, Madden TL, Schaffer AA, Zhang J, Zhang Z, Miller W, Lipman DJ: Gapped BLAST and PSI-BLAST: a new generation of protein database search programs. *Nucleic Acids Res* 25:3389–3402, 1997
- Arava Y, Adamsky K, Belleli A, Shaltiel S, Walker MD: Differential expression of the protein kinase A regulatory subunit (RI $\alpha$ ) in pancreatic endocrine cells. *FEBS Lett* 425:24–28, 1998
- Welsh J, Chada K, Dalal SS, Cheng R, Ralph D, McClelland M: Arbitrarily primed PCR fingerprinting of RNA. *Nucleic Acids Res* 20:4965–4970, 1992
- Liang P, Pardee AB: Recent advances in differential display. *Curr Opin Immunol* 7:274–280, 1995
- Nakane M, Saheki S, Kuno T, Ishii K, Murad F: Molecular cloning of a cDNA coding for 70 kilodalton subunit of soluble guanylate cyclase from rat lung. *Biochem Biophys Res Commun* 157:1139–1147, 1988
- McDaniel ML, Kwon G, Hill JR, Marshall CA, Corbett JA: Cytokines and nitric oxide in islet inflammation and diabetes. *Proc Soc Exp Biol Med* 211:24–32, 1996
- Han X, Kubota I, Feron O, Opel DJ, Arstall MA, Zhao YY, Huang P, Fishman MC, Michel T, Kelly RA: Muscarinic cholinergic regulation of cardiac myocyte ICA-L is absent in mice with targeted disruption of endothelial nitric oxide synthase. *Proc Natl Acad Sci U S A* 95:6510–6515, 1998
- Darnell JJ: STATs and gene regulation. *Science* 277:1630–1635, 1997
- Schindler C, Darnell JJ: Transcriptional responses to polypeptide ligands: the JAK-STAT pathway. *Annu Rev Biochem* 64:621–651, 1995
- Mueller R, Bradley LM, Krahl T, Sarvetnick N: Mechanism underlying counterregulation of autoimmune diabetes by IL-4. *Immunity* 7:411–418, 1997
- Saha V, Chaplin T, Gregorini A, Ayton P, Young BD: The leukemia-associated-protein (LAP) domain, a cysteine-rich motif, is present in a wide range of proteins, including MLL, AF10, and MLLT6 proteins. *Proc Natl Acad Sci U S A* 92:9737–9741, 1995
- Goodman SA, Albano R, Wardle FC, Matthews G, Tannahill D, Dale L: BMP1-related metalloproteinases promote the development of ventral mesoderm in early *Xenopus* embryos. *Dev Biol* 195:144–157, 1998